



Surc

## QUICK START GUIDE

PLEASE SURC RESPONSIBLY

1

**DOWNLOAD** the Surc app from the iTunes App Store and install onto your iPhone.

*TIP: restart your iPhone after installation.*

2

**TAP** open the Surc app after you have placed your iPhone in the Surc case. Wait a moment for the LED lights to turn green, indicating a successful connection.

**FAQS**

[www.GetSurc.com/FAQs](http://www.GetSurc.com/FAQs)

**VIDEOS**

[www.GetSurc.com/Videos](http://www.GetSurc.com/Videos)

**LEARN**

[www.GetSurc.com/Learn](http://www.GetSurc.com/Learn)

3

**CREATE** your Surc community account so you can back-up and share remotes, and interact with all the other awesome Surc users like you.

4

**VISIT** [www.GetSurc.com](http://www.GetSurc.com) to learn everything you need to know about Surc, from the app to troubleshooting tips to warranties.

### IN THE BOX:

**ONE (1) SURC CASE**

**ONE (1) MICRO-USB CABLE**

**(∞) UNLIMITED FUN**

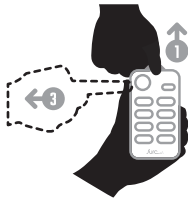


## PUTTING CASE ON

1. **SLIDE** your device into the Dock Connector located at the inside bottom of Surc Case and **PUSH** down gently.
2. **PUSH** your device back into the case from the top. You will hear a **CLICK** when it is securely inserted.

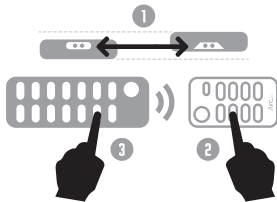
*TIP: Install and launch the Surc application prior to inserting device into case. Lights on top of Surc application will switch from RED to GREEN when successfully connected to Dock Connector.*

Check out [www.GetSurc.com/Videos](http://www.GetSurc.com/Videos) to watch a quick How-To video on inserting and removing your Surc Case.



## TAKING CASE OFF

1. Hold Surc Case in one hand and using thumb of other hand, **PULL UP** on top of case to release the latch. You will hear a click release.
2. At the same time, **PUSH** your device **OUT** of the case from the back circle opening.
3. **PULL** the case away from your device at the upper left (by the volume buttons) while continuing to **PUSH** your device from the back. You will hear a click release.
4. Your device is now released from the case. **WIGGLE** your device out of the Dock Connector.



## PAIRING TIPS

1. In pairing view, **POINT** Surc **LEDs** at your remote control LEDs (approx. 1-inch apart and on same **LEVEL**)
2. **TAP** the button you want to pair on Surc (a 10-second countdown will appear)
3. **QUICK TAP** the corresponding button on your remote

*TIP: Your remote control should have new batteries and your device should be fully charged.*

Check out [www.GetSurc.com/FAQs](http://www.GetSurc.com/FAQs) and [www.GetSurc.com/Videos](http://www.GetSurc.com/Videos) for more tips.